

INFORMATION FOR THE POWELL BUTTE COMMUNITY MEETING WITH PACIFICORP ON THE BLUEPRINT PROJECT

July 29, 2025

The following 4 pages provide background information regarding PacifiCorp's Blueprint Project. Here is a summary of the information on each page:

Page 1

Page 1 is PacifiCorp's map of the five possible Routes that PacifiCorp is currently planning to choose from for the 500kV transmission line called Blueprint South. **500kV transmission lines have 17-story metal towers.** All of these Routes (A, B, C, D, and F) start near Klamath, OR and end just east of Redmond, OR at a planned new 50-acre Full Circle substation. What PacifiCorp is not telling the community is that it is also planning Blueprint North, going north from the Full Circle substation in Redmond to Boardman, OR, which would mean a second 500kV transmission line, with 17-story towers, also across the heart of Central Oregon.

Page 2

Page 2 explains that PacifiCorp is planning many additional power lines across Powell Butte land than it has disclosed to the community. If PacifiCorp chooses Route D for Blueprint South (which seems to be its preferred choice), its massive transmission line would plow east to west through miles of irrigated, prime ranch land, homes, and ag businesses in the Houston Lake Rd/Cornett Loop area to the Full Circle substation outside Redmond. Blueprint North could mean a second 500kV transmission line across the same ranch land, with another 50-acre substation off Houston Lake Road. And no matter which Route PacifiCorp chooses (A, B, C, D, or F), it will build **FOUR** 230kV lines right across Powell Butte. The top map on Page 2 shows one possible path for the four 230kV transmission lines (Alternative A). The bottom map shows another possible route for the 230kV lines (Alternative B). The 230kV lines, plus possibly two 500kV lines, cross precious Powell Butte farm and ranch land and will change Powell Butte forever.


Page 3

Oregon's power and power transmission needs are real. It is electricity rate payers who ultimately foot the bill for huge transmission projects like Blueprint. There isn't enough time or money that can be squeezed from customers to build the wrong solution for Oregon. Page 3 is a map showing that PacifiCorp proposes to spend more than \$3 billion to build its transmission lines along the same routes as Bonneville Power Administration's (BPA's) new grid projects. BPA already has plans for a new 500kV transmission network from the Columbia River to the southern Oregon border, through Powell Butte. (There would be TWO 500kV lines from the Columbia to Powell Butte and one 500kV line from Powell Butte to the southern border). BPA plans to put in a new, big substation in Powell Butte, close to PacifiCorp's existing substation that PacifiCorp could expand to tap into for Prineville's data centers and solar farms. BPA also plans a new 230kV line from Powell Butte to LaPine that can bring more power to Bend and Redmond. Rather than coordinating with BPA, PacifiCorp's Blueprint project duplicates BPA's transmission upgrades along the same path and asks customers to pay twice for the same solution.

Page 4

Page 4 shows what could be a totally different route for PacifiCorp's Blueprint project. A more eastern route saves Central Oregon from the catastrophic effects of all of PacifiCorp's proposed A, B, C, D, and F Routes and does not duplicate BPA's new transmission line projects. The East Route serves one of PacifiCorp's objectives of taking excess solar power generated in Southern Oregon and Northern California to the huge load in the Boardman area, with its 61 (and growing number of) data centers.

PacifiCorp's Current Blueprint South Route Options



Blueprint South

500-kV Transmission Line Project

map at blueprintsouth.com

WELCOME

PROJECT OVERVIEW

PUBLIC OUTREACH

RESOURCES

CONTACT US

Location Search

Enter an address

ROAD MAP

SATELLITE

↑

+

-

↺

↻

↻

↑

↓

↗

Blueprinted North to Boardman

New Full Circle substation

Blueprinted South

Blueprinted North

Route A

Route B

Route C

Route D

Route F

Terrebonne

Fore Cross

Simulacra State Park

Redmond

Pronghorn

Deschutes

BOYD ACRES

AWBREY BUTTE

Bend

MOUNTAIN VIEW

LARKSPUR

OLD FARM DISTRICT

SOUTHWEST BEND

Seventh Mountain

Deschutes River Woods

Tetherow

Brasada Ranch

Alfalfa

Prineville Lake Acres

Juniper Canyon

Prineville Reservoir State Park

Roberts

Oregon Backlands Wilderness

Google

Blueprinted South is a 500kV transmission line, with **17-story metal** towers and a 250' wide right of way, ending at Full Circle substation east of Redmond.

Blueprinted North will be another 500kV transmission line with **17-story** towers, going to Boardman from Full Circle substation.

All transmission line routes start near Klamath, Oregon and will end near Boardman, Oregon

Keyboard shortcuts

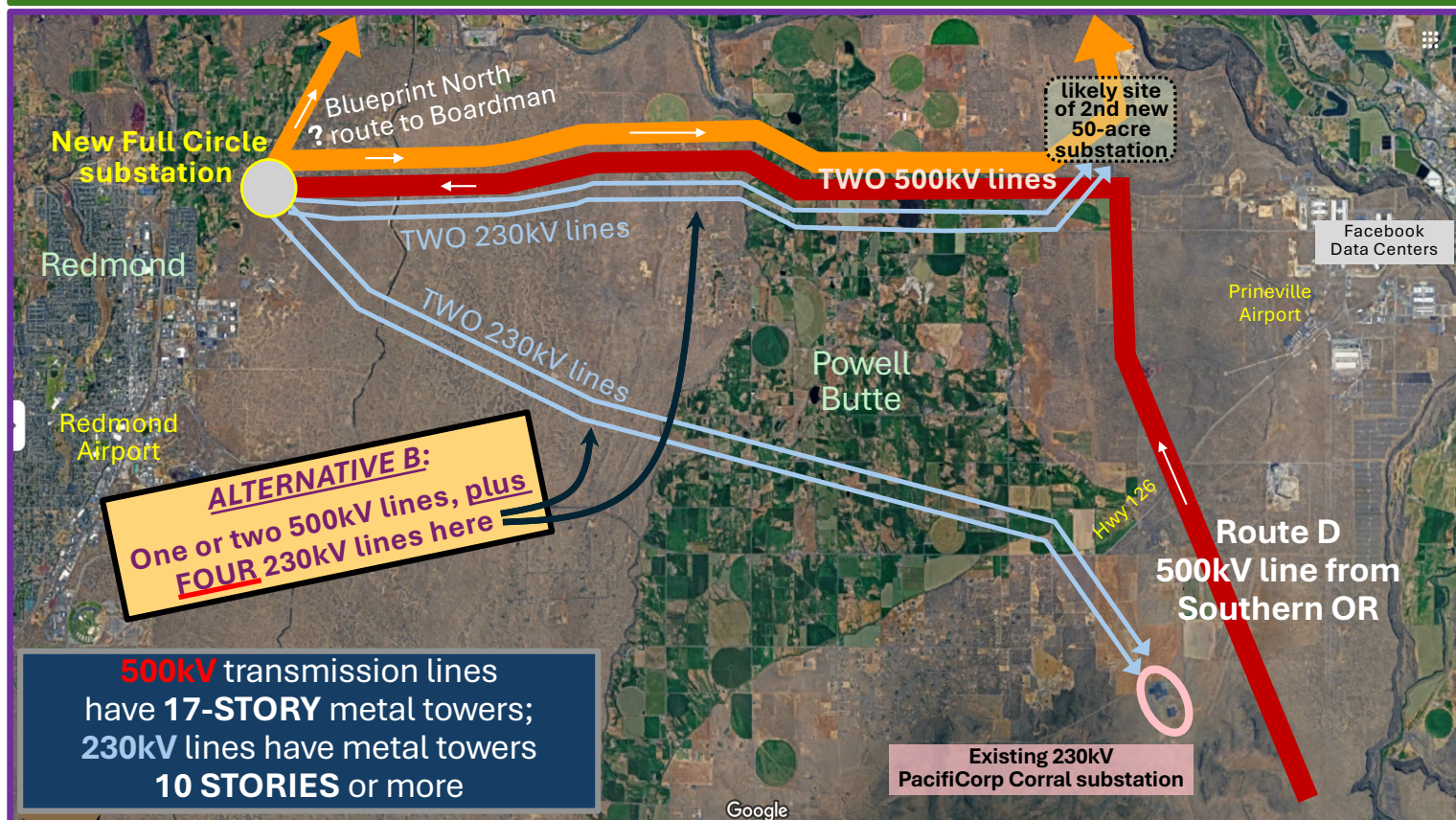
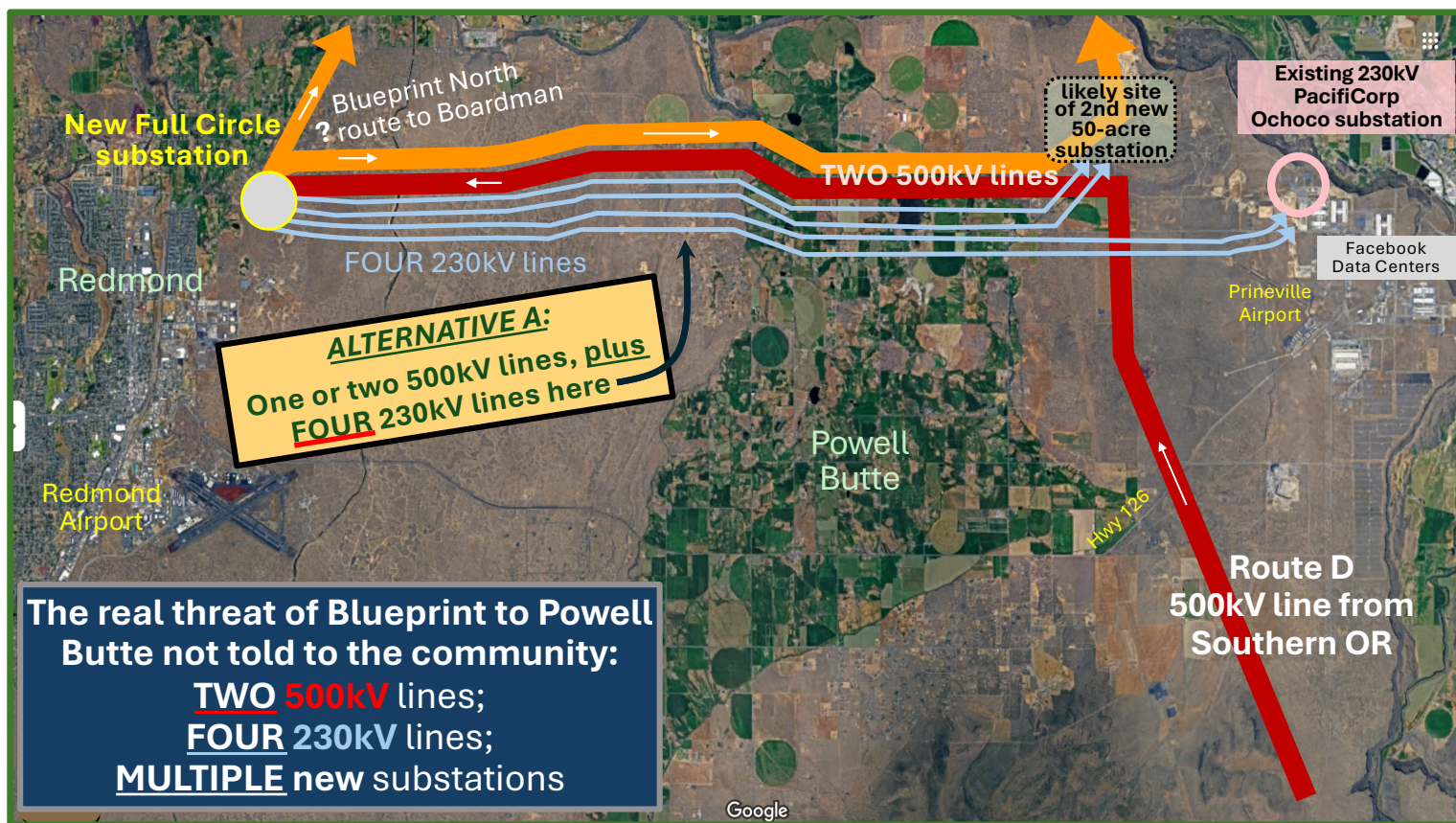
Map Data ©2025

Terms

Report a map error

There are TWO Blueprint Projects - South and North

Here are PacifiCorp's **ROUTE D** Alternatives Across Powell Butte



BONNEVILLE POWER AND PACIFICORP PROPOSE THEIR NEW 500kV LINES IN THE SAME CORRIDOR

OREGON'S POWER AND TRANSMISSION NEEDS ARE TOO CRITICAL TO SQUANDER TIME AND MONEY BUILDING THE SAME PROJECT TWICE (AT FOUR TIMES THE COST)

Bonneville Power Administration (BPA) and PacifiCorp Plans

- Same project justifications, with common routes, meaning customers ultimately pay twice for transmission upgrades in the same corridors
- PacifiCorp's Blueprint is more than 3 times the cost of BPA's plan, with less capacity (by their own numbers)
- PacifiCorp could tap into BPA's new transmission and share some infrastructure for the South/North Oregon route

MAP OF NEW TRANSMISSION LINE PROJECTS

The highlighted sections are the hundreds of miles where PacifiCorp's Blueprint route, costing more than \$8 million per mile, overlaps BPA's proposed new 500kV and 230kV transmission lines

Examples of places PacifiCorp could connect to new BPA upgrades to serve its customers in Central Oregon

BPA's proposed new high voltage line from the Prineville area to LaPine can bring more power to Bend and Redmond

	Same Project Purposes	Route	Capacity Increase	Cost (their numbers)	Who Ultimately Pays the Costs	Financial Driver
BPA's Evolving Grid and Other Projects	<ul style="list-style-type: none"> * renewable energy development * regional load growth 	Southern to Northern Oregon	2000 - 2500 megawatts (for double circuit to Bonanza)	range of \$1 billion	electricity customers	non-profit organization
PacifiCorp's Blueprint Projects	<ul style="list-style-type: none"> * reliability needs * commercial requests for transmission 	Southern to Northern Oregon	1500 megawatts	over \$3 billion	electricity customers	corporate profits come from building projects like Blueprint

ALTERNATIVE BLUEPRINT ROUTE An East Route

BPA's proposed 500kV transmission network from the Columbia River to the south Oregon border, including TWO 500kV lines from the Columbia to POWELL BUTTE

The Boardman area has over **60** data centers, and more are coming

PROPOSED NEW ROUTE
An East Route For Blueprint That Connects North And South Without Duplicating BPA's Grid Projects or Devastating Central Oregon

Blueprint's current routes would destroy precious farm and ranch land and decimate some of the most renowned, visited, and cherished parts of Central Oregon

The East Route avoids designated critical habitat areas

PacifiCorp's Blueprint South alternative routes

The highlighted part is a section of a new 500kV transmission line PacifiCorp is already planning to build in another project

Southern Oregon and Northern California have excess solar power generation
PacifiCorp wants to take north and east

