

Details Behind PacifiCorp's Blueprint Transmission Line Projects

More Transmission Capacity and More Power are Needed
But, Blueprint Is The Wrong Project In The Wrong Place

June 2025

Blueprint South is only part of PacifiCorp's plans for transmission lines across central Oregon

(Blueprint South, North, and East transmission lines initiated in 2022-2023 planning process)

- Blueprint South: Snow Goose Full Circle 500 kV
- Blueprint North: Full Circle Apex 500 kV
- Blueprint East: Apex Maverick Feedville 500 kV

*PacifiCorp Integrated Resource Plan filed with the Oregon Public Utility Commission, March 31, 2025, p.5

****Boardman/Hermiston area has more than 60 data centers**

PacifiCorp *2025 Annual Progress Report*

II. Blueprint Transmission Project

The Blueprint transmission project will connect major resource and load areas in central and eastern Oregon through construction of approximately 320 miles of new 500 kV transmission line and associated 500 kV and 230 kV system upgrades. The project was initiated in PacifiCorp' 2022-2023 local planning process and is included in the 2022-2023 biennial Local Transmission System Plan and 2024-2025 NorthernGrid Regional Planning process. The project components are grouped into three primary segments:

- Blueprint South: Snow Goose-Full Circle 500 kV
- Blueprint North: Full Circle-Apex 500 kV
- Blueprint East: Apex-Maverick-Feedville 500 kV

Within each of the primary segments, new substations, series compensation stations and modifications to existing substations are identified to facilitate integration with the existing transmission system.

PacifiCorp plans to initiate the Initial Progress Report in 2025 and does not intend to seek a waiver of significant impact. The Blueprint project will largely parallel the existing Northwest AC Inter tie (NWACI) 500 kV system, interconnecting with that existing system at various points. As a result, significant coordination with NWACI owners and other affected systems is anticipated to be required and will likely affect the final plans and design for facilities.



Klamath to Redmond*

Redmond to Boardman**

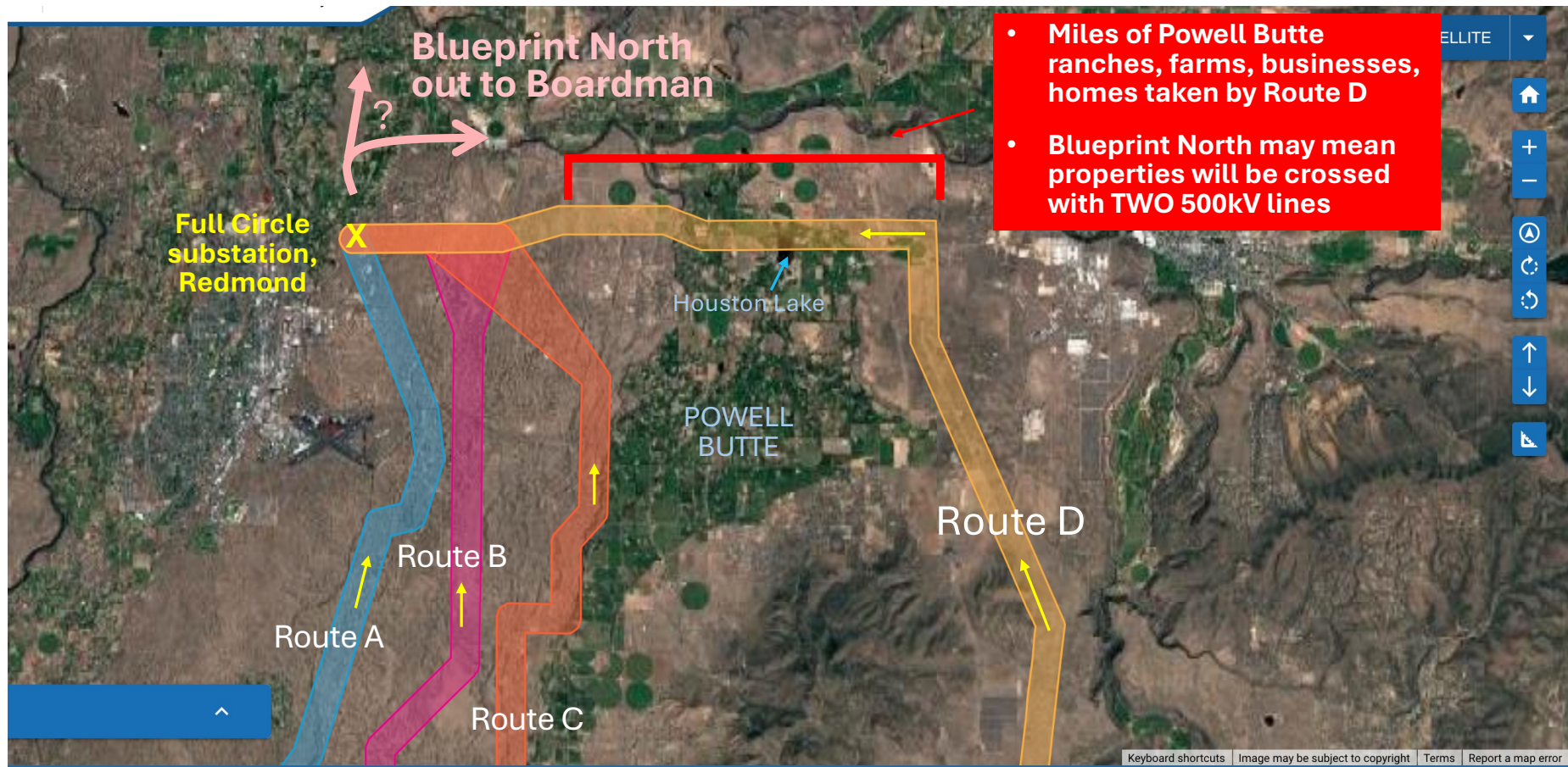
Boardman to substation on the line to Hemingway, Idaho, which connects to Wyoming and Utah



← **FEBRUARY 2025 PACIFICORP ANNUAL PROGRESS REPORT MAP**

- Blueprint South **500kV** transmission line and 17-story towers will go into the substation in Redmond
- For Blueprint North, **another 500kV** transmission line and 17-story towers will go out of Redmond substation toward Boardman (northeast)
- That means **MORE** land in central Oregon/Crook County crossed by powerlines and towers

- **One** PacifiCorp 500kV transmission line into Redmond Full Circle substation - Blueprint South
- A **SECOND** 500kV transmission line out of Redmond Full Circle substation - Blueprint North



BLUEPRINT SOUTH DOES NOT HELP CROOK COUNTY

Full Circle
substation,
Redmond

X

direction power will have to go to Crook County

Powell
Butte

Facebook
Data Centers

Prineville
Airport

Solar
project

Existing
substation
in Crook
County

Solar
project

- No matter which Blueprint South Route is chosen, it does **NOT** connect in Crook County.
- To bring power to Crook County or take power from our solar facilities, PacifiCorp has to put **ADDITIONAL** power lines across Powell Butte, taking even more land. It has never mentioned these additional lines to our communities.

Pacificorp's regulatory filings show even **more** connections to Full Circle substation

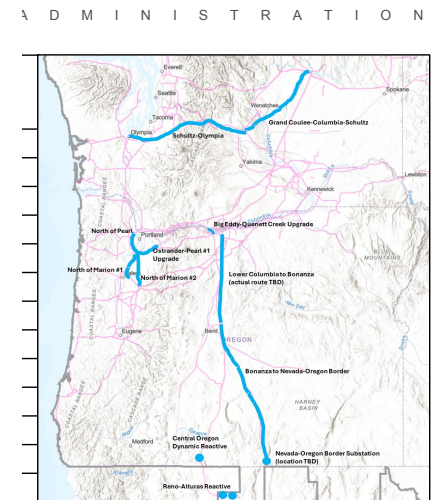
- PacifiCorp also plans to go **west** from Full Circle, installing a transmission line to the Albany, OR area.

(PacifiCorp Integrated Resource Plan filed with the Oregon Public Utility Commission, March 31, 2025, p.79)

- Although it is not telling our communities or leaders of all its plans, PacifiCorp is putting a stake in the ground with its Full Circle substation. Full Circle will be the hub from which PacifiCorp will go north, east, and west. It could ask in the future to put a second 500kV line from Klamath, up the same corridor to Redmond.
- **Central Oregon will be handcuffed and unable to stop future power lines across our communities once this hub is established.**

BPA also planning more 500kV lines

- BPA has plans for 2 more 500kV transmission lines from the Columbia River to the Oregon-Nevada border
(BPA Pacific Northwest Regional Forecast, October 2024)
- BPA has 3 existing 500kV transmission lines that run from dams on the Columbia River all the way to Los Angeles, CA. These 3 lines run north to south in Crook County near the Prineville Airport, on private land. The two **new** BPA lines may follow this corridor, taking more Crook County property.

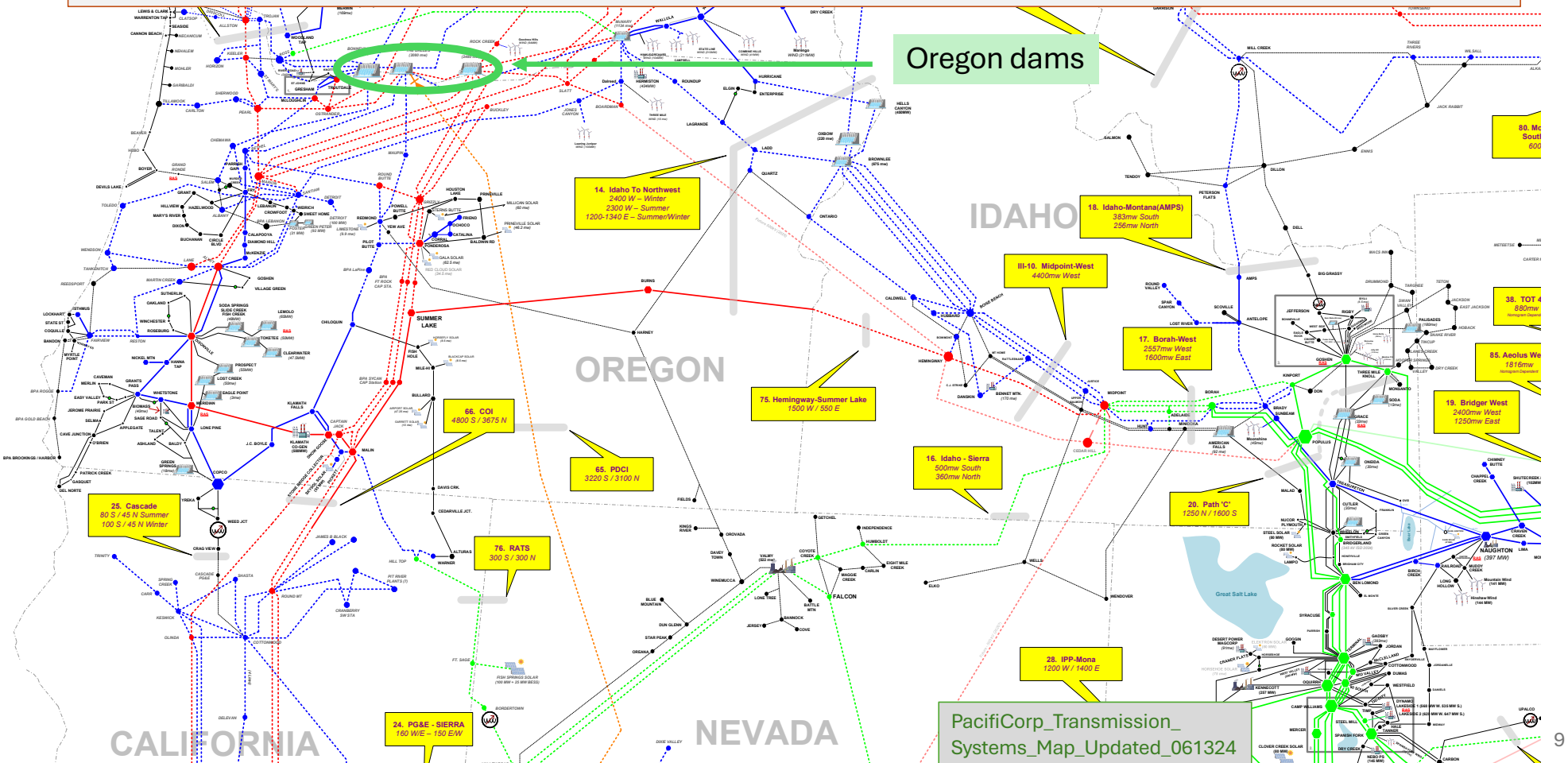


Key Facts about PacifiCorp's 500kV lines

(supported in following pages)

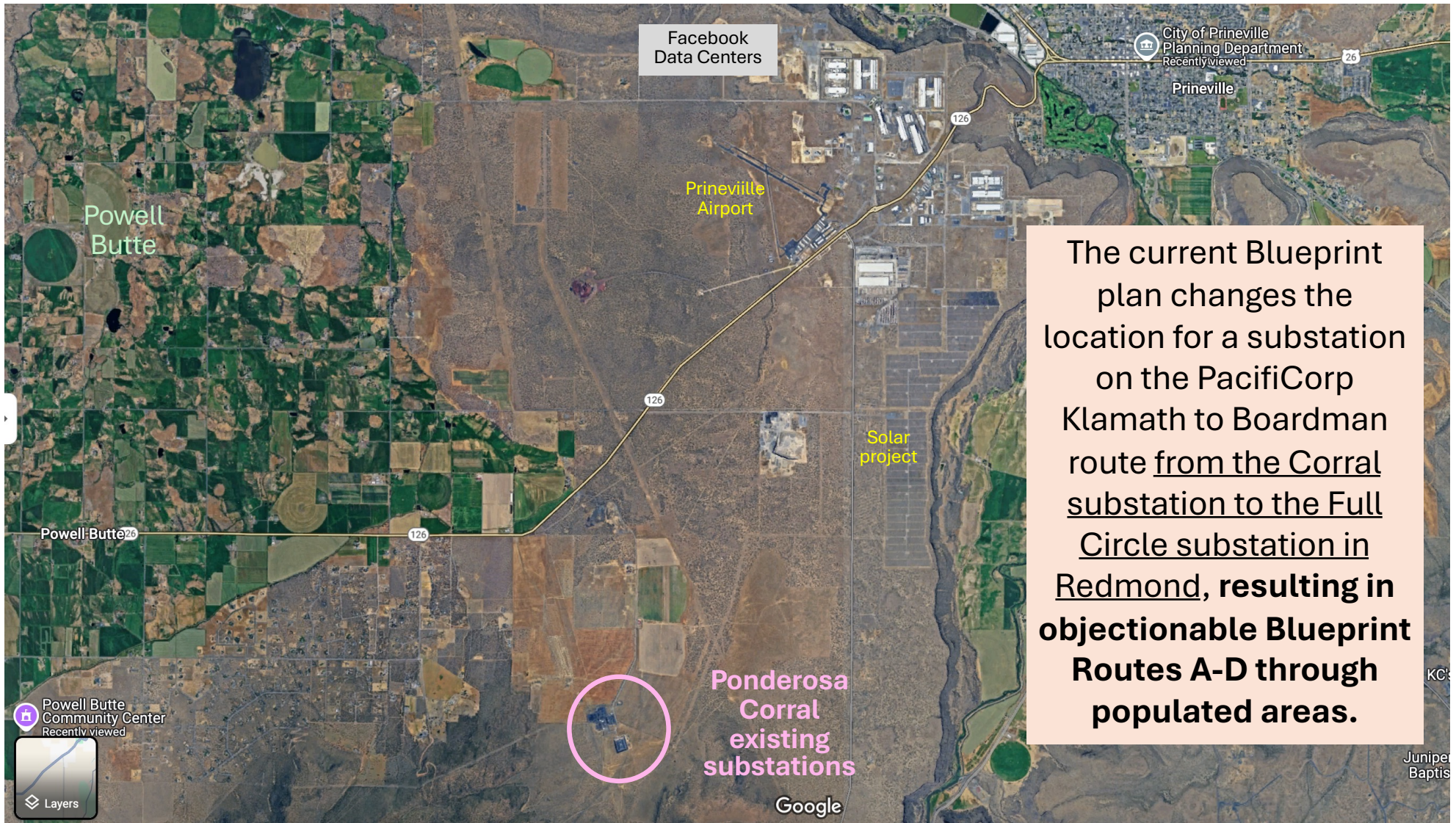
- 500kV power lines are transmission superhighways. Putting a 500kV transmission line into Redmond is not necessary for delivering power for growing needs in Deschutes or Crook Counties or for getting power generated in central Oregon onto the grid.
- Even if PacifiCorp justifies a need for **500kV** transmission lines, putting them through central Oregon's populated areas is not reasonable.
- Large infrastructure projects like new transmission lines, poles, and substations are how power companies make profits; the larger the project PacifiCorp can impose, the more profit it makes.

Existing 500kV lines are **red**, running from Columbia River dams and traveling across states.
230kV **blue** lines transmit power for local loads.



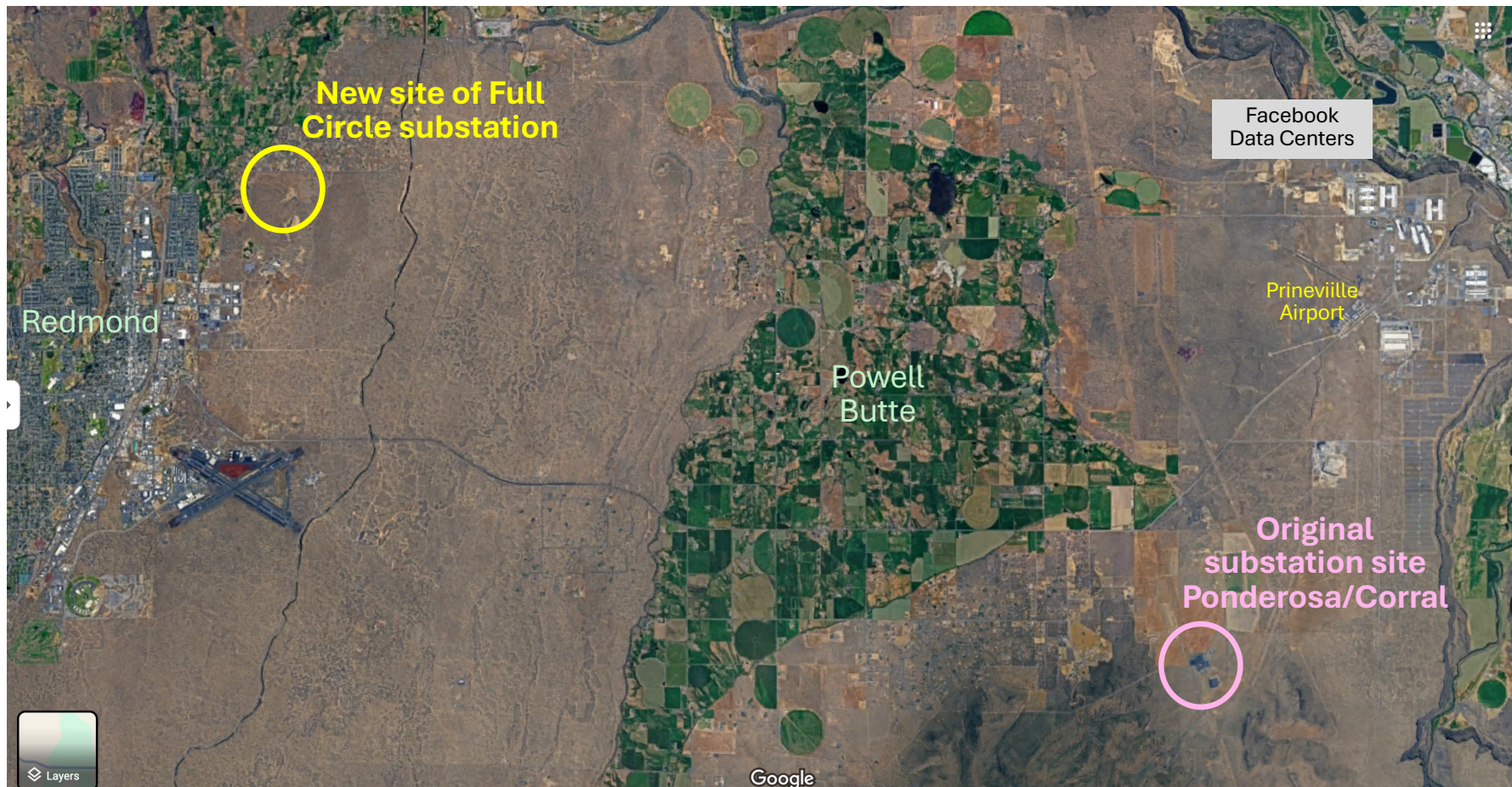
The purpose of Blueprint's 500kV transmission lines are not to deliver power to central Oregon

- PacifiCorp could bring more power to central Oregon and move power generated by solar facilities with smaller 115 or 230kV lines and their smaller towers.
- Blueprint's 500kV system is part of an interstate transmission loop PacifiCorp wants to create **between the Klamath area, the Boardman area, and the Boise, Idaho region, eventually going to Wyoming and Utah.**
- **Originally, a connection point in central Oregon for the big PacifiCorp loop was near the Ponderosa/Corral substations, close to the Prineville data centers, and not through Deschutes County or Powell Butte ranch land** *(see map next page).*



The current Blueprint plan changes the location for a substation on the PacifiCorp Klamath to Boardman route from the Corral substation to the Full Circle substation in Redmond, resulting in objectionable Blueprint Routes A-D through populated areas.

PacifiCorp's revised plans moved the substation for Blueprint South and North



The needed strengthening of the transmission system to support regional growth, data centers (AI), and solar/wind generation does not mean PacifiCorp's plans for a 500kV line **through Redmond** make sense

- PacifiCorp's own analysis tells another story
 - Solar, wind, and other facilities that generate power make Interconnection Requests to PacifiCorp to put their power onto the grid.
 - PacifiCorp evaluates the Requests and writes its own analysis. PacifiCorp's plans for south, central, and eastern Oregon are self-conflicting.

PacifiCorp's transmission analysis:



*[Klamath area solar, etc.,
generation]*

Generation Interconnection

Cluster 3 Study Report

Cluster Area 13

March 8, 2024

Southern Oregon solar, etc., generates too much power for their load, so send it to central Oregon.

But it's too much power for that load also, so send it to eastern Oregon.

But it's too much power for that load also, so send it to Idaho/Utah/Wyoming



*[Boardman area solar, etc.,
generation]*

Generation Interconnection

Cluster 3 Study Report

Cluster Area 14

March 8, 2024

Eastern Oregon solar, etc., generates too much power for their load, so send it to central Oregon.

But it's too much power for that load also, so send it to southern Oregon.

But it's too much power for that load also, so send it to Idaho/Utah/Wyoming



[Prineville solar projects]

Generation Interconnection

Cluster 2 Study Report

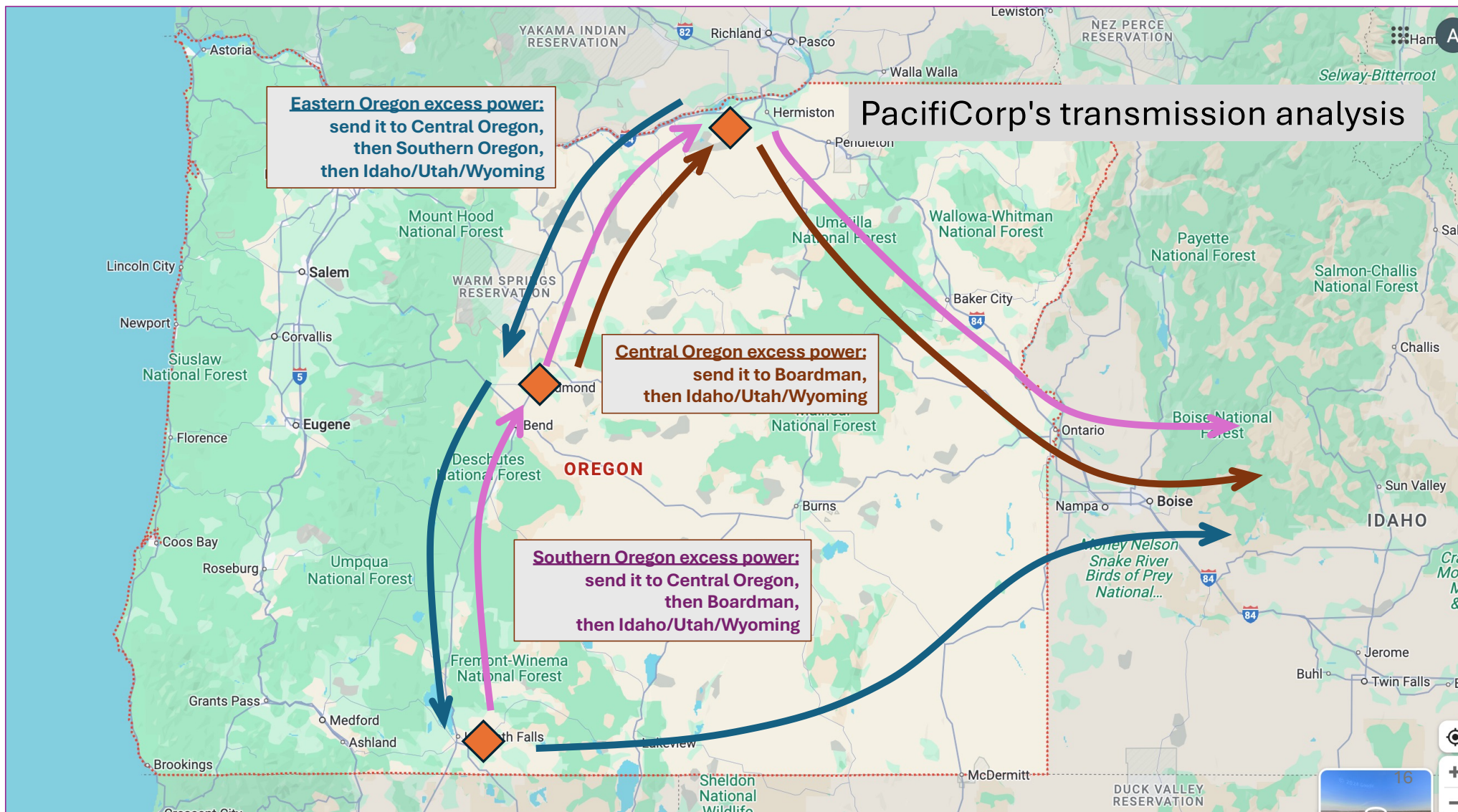
Cluster Area 18

August 3, 2023

PacifiCorp's transmission analysis:

Central Oregon solar, generates too much power for our load, so send it to eastern Oregon.

But it's too much power for that load also, so send it to Idaho/Utah/Wyoming



A better blueprint?

Location Search
Enter an address

ROAD MAP

SATELLITE

Instead of burdening central Oregon citizens by having its routes **here**, can PacifiCorp put its 500kV lines farther **east**, where in some places they already have lines?

★ New 500kV substation on remote site, with smaller lines in and out

Why not put the **500kV loop** farther east?

Existing PacifiCorp line

LEGEND

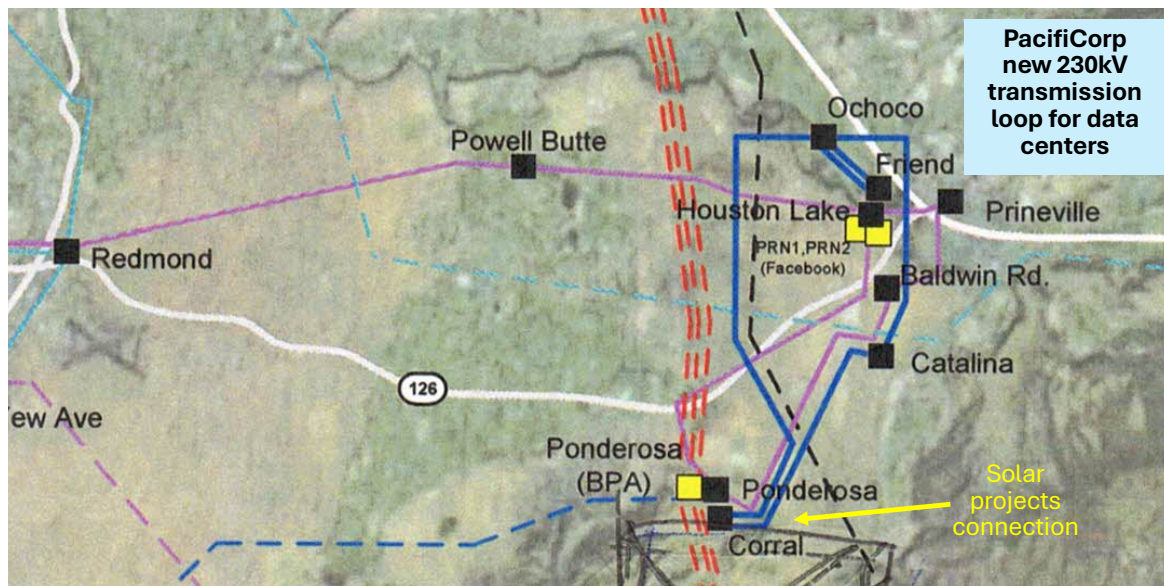
Google

Keyboard shortcuts | Map Data ©2025 Google Imagery ©2025 NASA | Terms | Report a m

Are there better alternatives to PacifiCorp's plans?

Rather than taking it north and east, is it possible for solar power generated in Crook County, across the highway from the data centers, to be used locally for that load?

PacifiCorp's map shows its new 230kV loop to the data centers connects to the Corral substation, where existing and new solar facilities connect.



PacifiCorp local transmission line map

Blue 230kV lines

Pink 115kV lines

Understanding PacifiCorp's motivations - it makes money on big transmission lines

- Power companies make profit not by selling electricity but by building infrastructure, like poles, transmission lines, and substations
 - a company is reimbursed for its costs, plus is allowed to add a percentage as profit
 - **the bigger the infrastructure project, the more the profit**
 - the expenses plus profits are passed on to customers in their electricity rates

<https://www.sightline.org/2020/05/18/playing-monopoly-or-how-utilities-make-money/>
<https://www.nrdc.org/bio/jc-kibbey/utility-accountability-101-how-do-utilities-make-money>

Blueprint Projects Projected at > \$3 Billion

PacifiCorp Integrated Resource Plan filed with the Oregon Public Utility Commission, March 31, 2025,

PACIFICORP – 2025 IRP

CHAPTER 1 – EXECUTIVE SUMMARY

Table 1.1 – Transmission Projects Included in the 2025 IRP Preferred Portfolio ^{1,2}

		Export (MW)	Import (MW)	Interconnect (MW)	Build Investment (\$m)	Build (%)	From	To
2026	Utah South - Wasatch Front: 138 kV reinforcement #1	250	250	250	30	100%	Utah South	Wasatch Front
2028	Cluster 1 Area 11: Willamette Valley	0	0	199	14	100%	n/a	n/a
	Cluster 1 Area 14: Summer Lake	400	400	400	111	100%	Summer Lake	Hemingway
	Cluster 1/2/3: Walla Walla	0	0	393	328	100%	n/a	n/a
	Serial queue: Central Oregon	0	0	152	4	100%	n/a	n/a
	Serial/Cluster 1/2: Yakima	0	0	628	64	100%	n/a	n/a
	Utah South - Wasatch Front: 138 kV reinforcement #2	200	200	200	12	100%	Utah South	Wasatch Front
2029	Cluster 2 Area 23: Willamette Valley	0	0	393	2	100%	n/a	n/a
2030	Cluster 2 Area 19: Summer Lake to Central Oregon 500 kV	1,500	1,500	670	1,283	100%	Summer Lake	Central OR
	Walla Walla - Yakima 230 kV	400	400	400	142	100%	Walla Walla	Yakima
2031	Serial through Cluster 1 Area 13: Southern Oregon	0	0	231	42	100%	n/a	n/a
2032	Cluster 1 Area 12: Southern Oregon	0	0	300	303	100%	n/a	n/a
2033	Cluster 2 Area 18: Central Oregon 500 kV Substation	0	0	518	372	100%	n/a	n/a
2039	Walla Walla - Central Oregon 500 kV	1,500	1,500	670	1,463	100%	Walla Walla	Central OR
Grand Total		4,250	4,250	5,404	4,169			

Power transmission needs are real, and the power business is complex

- PacifiCorp faces losing its business in Idaho, Wyoming, and Utah and it has large deferred costs from other projects it must try to recover.

<https://wyofile.com/pacificorp-mulls-breakup-that-could-align-wyoming-with-other-pro-coal-states/>

<https://cowboystatedaily.com/2025/04/18/politically-red-wyoming-utah-and-idaho-talk-break-from-power-giant-pacificorp/>

- Also, contracts BPA has with customers like Central Electric Coop and PacifiCorp expire in 2028.

BPA Pacific Northwest Regional Forecast, October 2024

- Projects like Blueprint South need to be more fully understood in context so that Crook County is not taken advantage of.

The Bottom Line

- Reliable power and increased transmission capacity are needed in central Oregon
- The business of providing and transmitting power is complex. Utility companies can, and have in the past, hidden the ball in their proposals to the public. Crook County should withdraw its support of PacifiCorp's Blueprint South project until the project is fully understood and vetted, to ensure the plan is fair, sensible, and addresses the power needs and citizen concerns of our County.

PacifiCorp's Dragged Out Process is Devastating to Landowners

- PacifiCorp has delayed Blueprint South for a year, meaning its routing decision will not be announced until the end of 2026.
- But PacifiCorp is keeping all the route alternatives in play during the delay. That means the sword continues to hang over all the citizens affected by all the routes for even a longer period of time.
- During the year and a half before PacifiCorp's decision is imposed, property rights are lost (*see email on following page*).

Email from a Citizen to PacifiCorp's Blueprint South Project Manager

Email To: John Aniello [*PacifiCorp Blueprint South Project Manager*]

Sent: Friday, June 13, 2025

John,

Thank you for responding, although the way in which PacifiCorp is proceeding seems unduly punitive to me as a landowner affected by PacifiCorp's actions but powerless to minimize the damage from them. Your alternative route maps encumber hundreds, maybe thousands, of central Oregon's property owners' rights. Our property values are **now** reduced by your route alternatives and sales of property along your Route D in Powell Butte have **already** been lost because of the specter of PacifiCorp's final decision. For many in our communities, our properties, ag businesses, and homes are our biggest and, at times, only assets. Land is often the means that many families have to provide financing for things like children, retirement, education, maybe even health care. This delay of PacifiCorp in making its decision known means our hands are tied, our rights burdened, and in some ways our options suspended for another year and a half. Everyone along all the routes remain longer under the dark prospect of losing our land or quality of life, and delay of bad news for those along the chosen Route of destruction is no solace.

You should know I have friends and neighbors who cannot sleep at night because of the very real possibility all of their - - and their children's -- life plans could be crushed by the transmission superhighway PacifiCorp is proposing for central Oregon. The year delay, while keeping all the routes in play, just keeps the gun to all our heads longer.

I am not sure why the process PacifiCorp is following is not an unconstitutional taking of property. It certainly is a taking of families' full use of and benefits from their land, their peace of mind, and in some cases their future. Doesn't PacifiCorp have an obligation to act responsibly with respect to the citizens of central Oregon? PacifiCorp's delay, without offering relief to affected landowners or accurate details into all of its real plans (i.e., Blueprint South AND Blueprint North), is not fair or reasonable.

Property rights delayed are property rights taken. Our community will make our voice heard and pursue all avenues to protect our homes and rights.